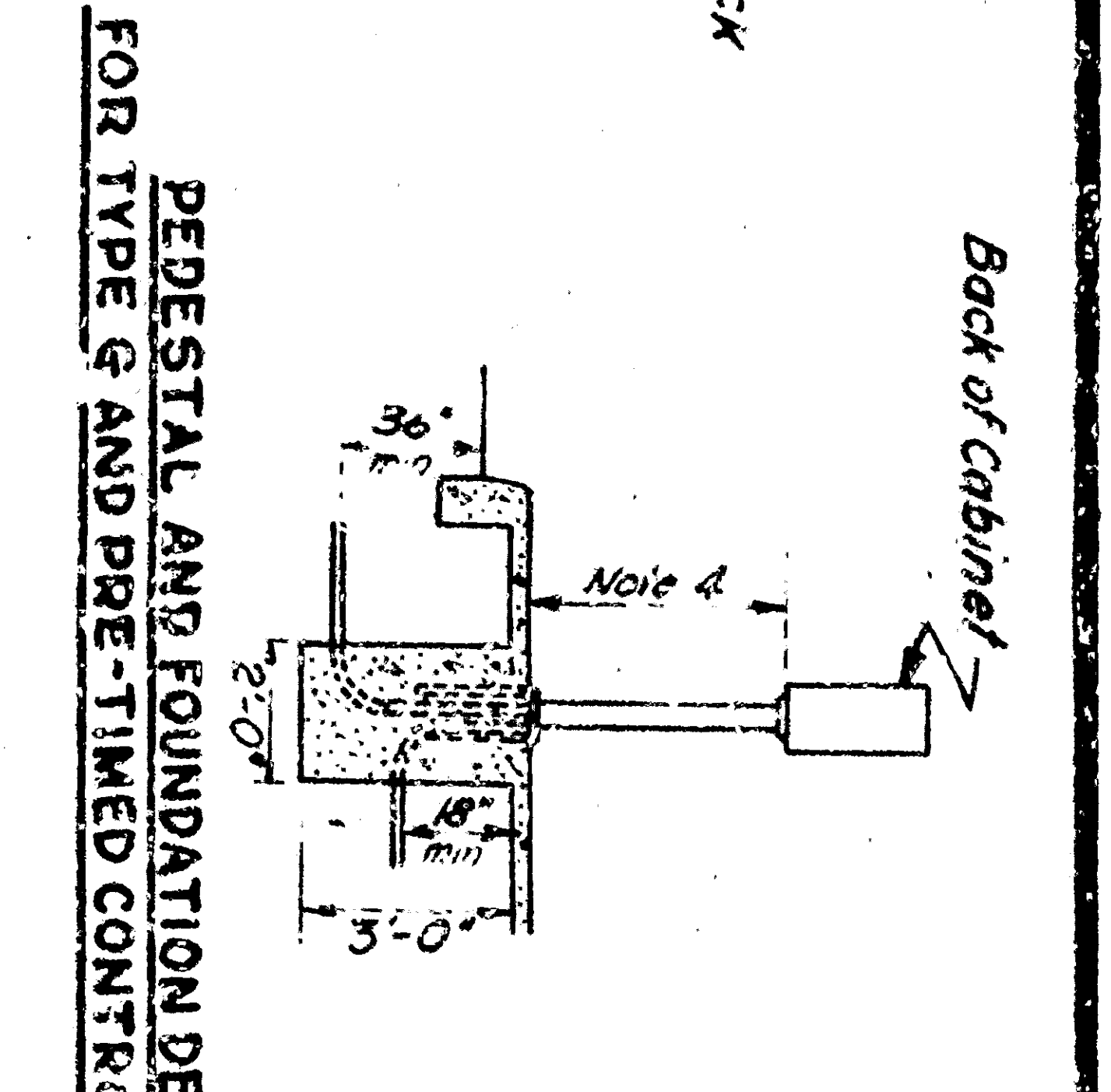
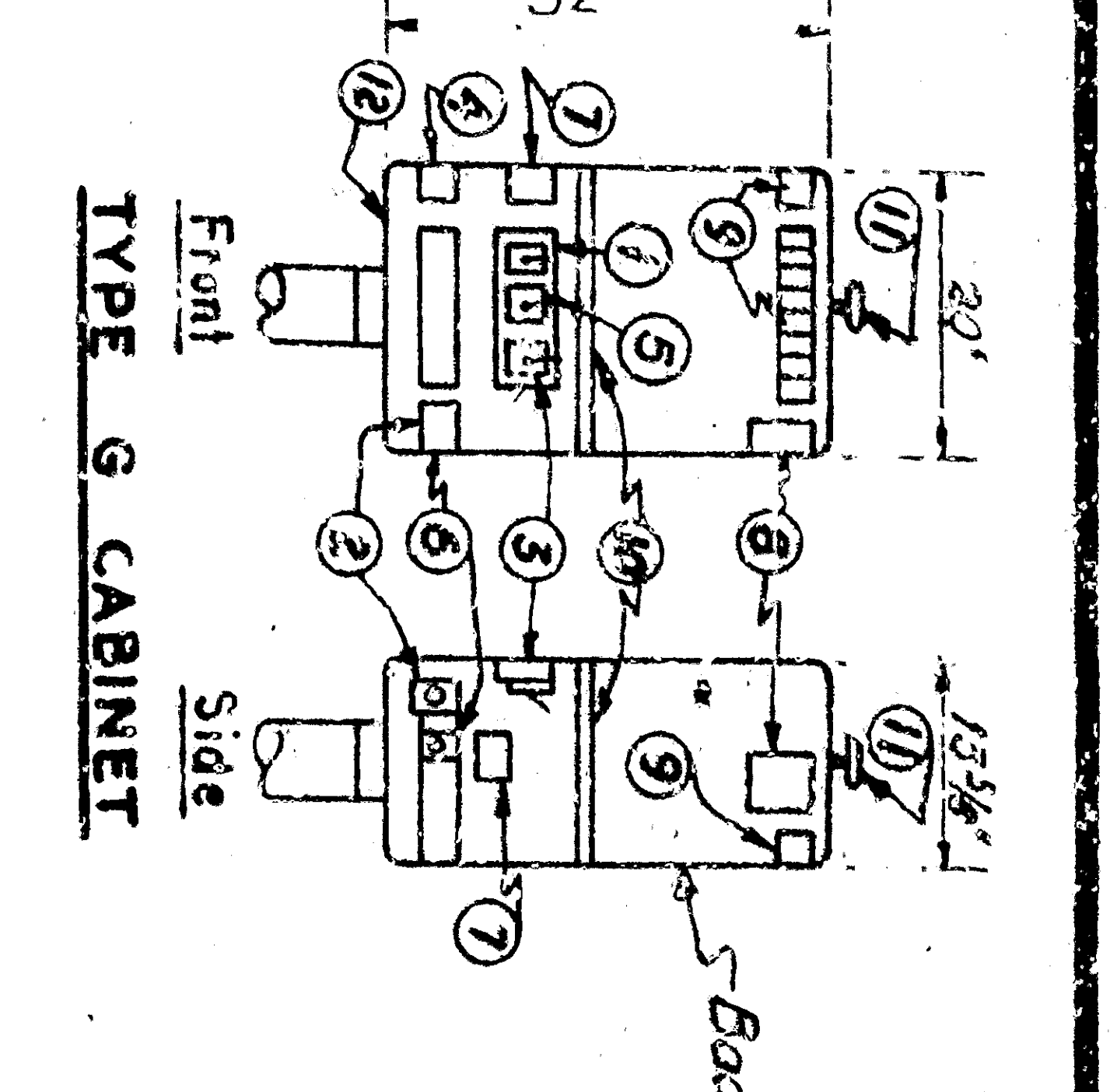


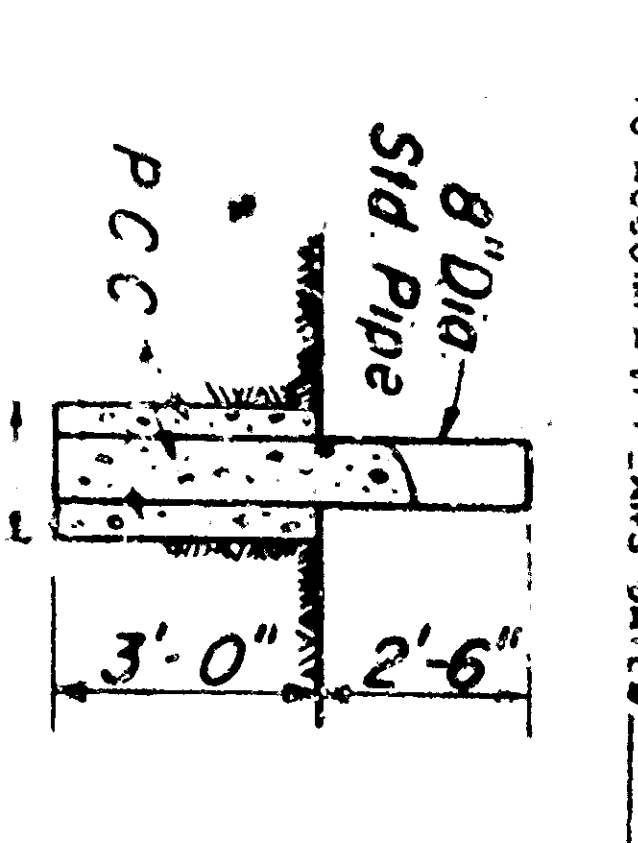
- DETAILS - TYPE M AND G CABINETS AND WIRING NOTES**
- 1 Main Switch
  - 2 Plug Fuse Receptacle
  - 3 Controller Flash-Signal-Switch
  - 4 Field Wire Terminal Blocks
  - 5 Auxiliary Door Flash Switch
  - 6 NEMA Standard Plug receptacle with grounding contact
  - 7 Radio Interference Suppressor
  - 8 Flasher
  - 9 External Light Relays
  - 10 Shelf
  - 11 Cabinet Rainlight Vent
  - 12 8-1/2" Screened Vent Holds
  - 13 1" Drain



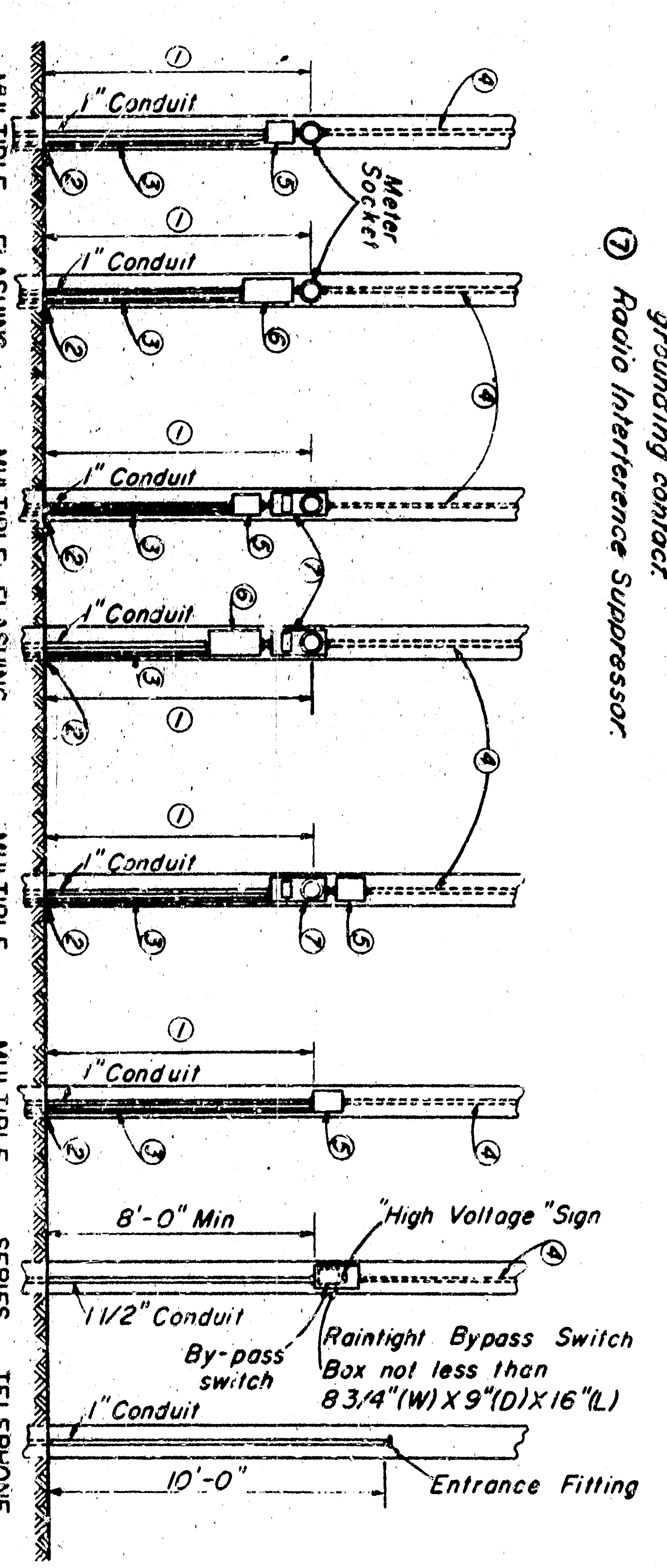
**GENERAL INSTALLATION NOTES - ALL CABINETS**

- 1 Foundations shall be located to provide 2'-0" minimum clearance between face of curb and back of cabinet.
- 2 One anchor bolt shall be bonded to conduit.
- 3 If telephone interconnect is specified a minimum of 5 inches clearance vertical space shall be left beneath all other equipment inside cabinet.
- 4 For details not shown see Special Provisions.
- 5 For telephone interconnect a 3/4" conduit shall be installed inside the pedestal to a point 1 inch above the floor of the cabinet finished surface of the P.C.C. pedestal. Conduit shall terminate in a No. 3/16 pull box adjacent to the foundation.
- 6 In unpowered areas a precast pad of 2'-6" x 3'-0" x 0.033' or P.C.C. surfacing shall be placed in front of each controller cabinet.

**TYPICAL GUARD POST**

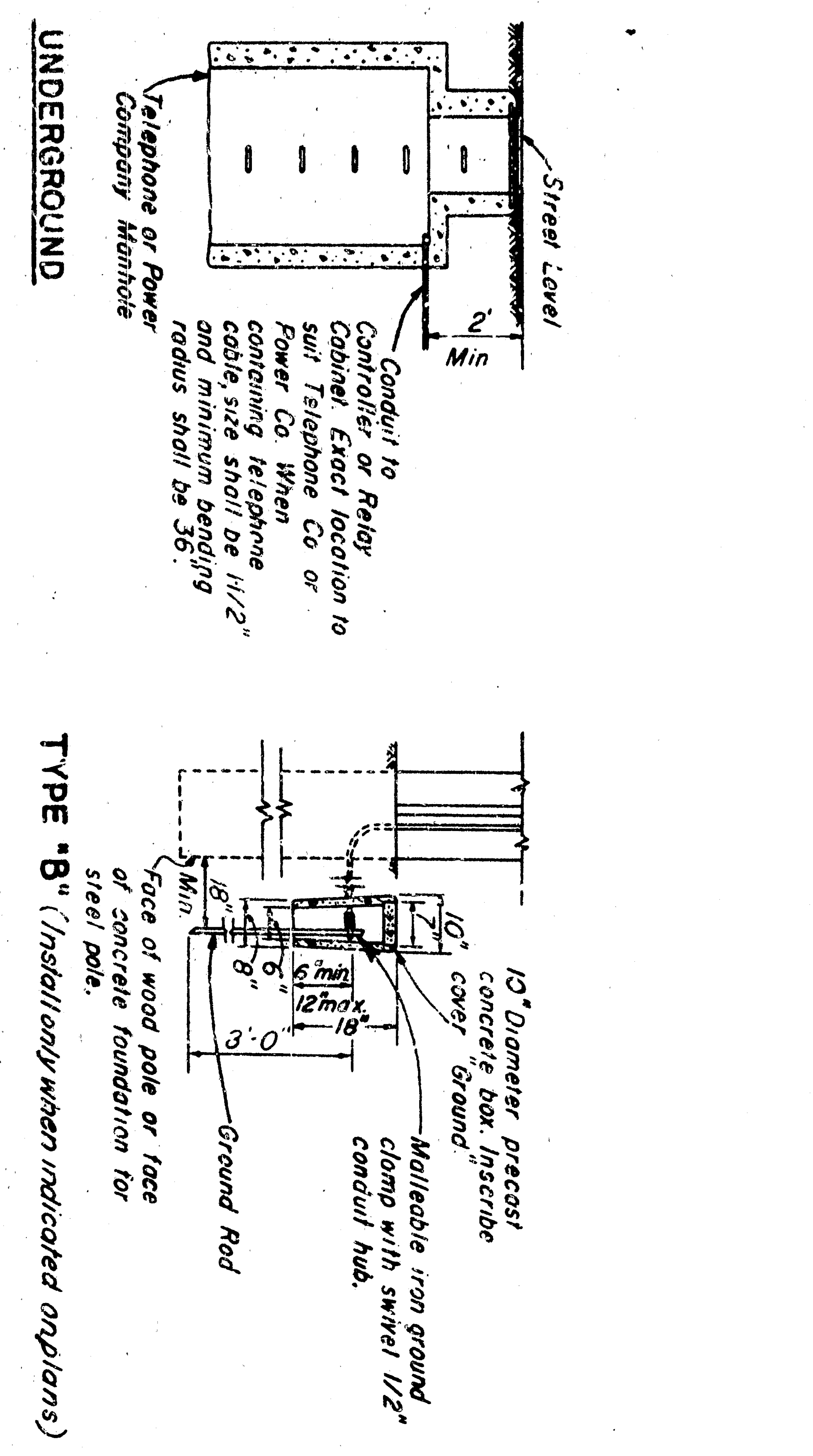


- NOTES**
- 1 Pedestal, Base and Foundation details similar to Type I-A Standard (Unless otherwise specified)
  - 2 Cabinets shall be provided with Slip Filter to permit mounting on 4 1/2" O.D. pedestal.
  - 3 Upper end of pedestal shall be 4 1/2" O.D.
  - 4 The distance between the bottom of the controller cabinet and top of the foundation shall be 3'-0" for pre-timed controllers.



- NOTES AND LEGEND**
- 1 Height of service equipment to be obtained from service utility.
  - 2 See grounding details at right for Types A, B, C, D, E, & F.
  - 3 Grounding conductor raceway shall be 1/2" conduit or hardwood moulding.
  - 4 If service pole is utility owned service conductors raceway and entrance fittings shall be furnished by contractor and installed by serving utility. On site owned poles contractor shall also install the service conductors, raceway, and entrance fittings. Service riser conduit shall be terminated with a service head or shall be sealed to prevent the entrance of water, as approved by serving utility.
  - 5 Switch as specified in rainlight cabinet.
  - 6 Meter Socket Box as approved by serving utility, with either manual circuit or closing device or space for test block, as specified.

**DETAILS OF CONTROLLER CABINETS**



- NOTES**
- When water pipe is used for ground wire shall be equivalent mechanical protection similar to ground rod of the following minimum requirements: B-0" Diameter of rod: 3/4" if galvanized rod or pipe 1/2" if solid rod of brass, copper or copper covered steel.

**ELECTRICAL AND TELEPHONE SERVICE DETAILS**

**SERVICE GROUNDING DETAILS**

STATE OF CALIFORNIA  
DEPARTMENT OF PUBLIC WORKS  
DIVISION OF HIGHWAYS

**STANDARD DETAILS NO. 1**  
TRAFFIC SIGNAL AND  
HIGHWAY LIGHTING  
INSTALLATIONS

SCALE AS NOTED  
REV. DATE 8-1-53  
DRAWING NO. E